

2014 Smithsonian Folklife Festival

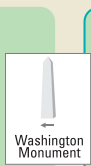


NATIONAL MUSEUM OF NATURAL HISTORY

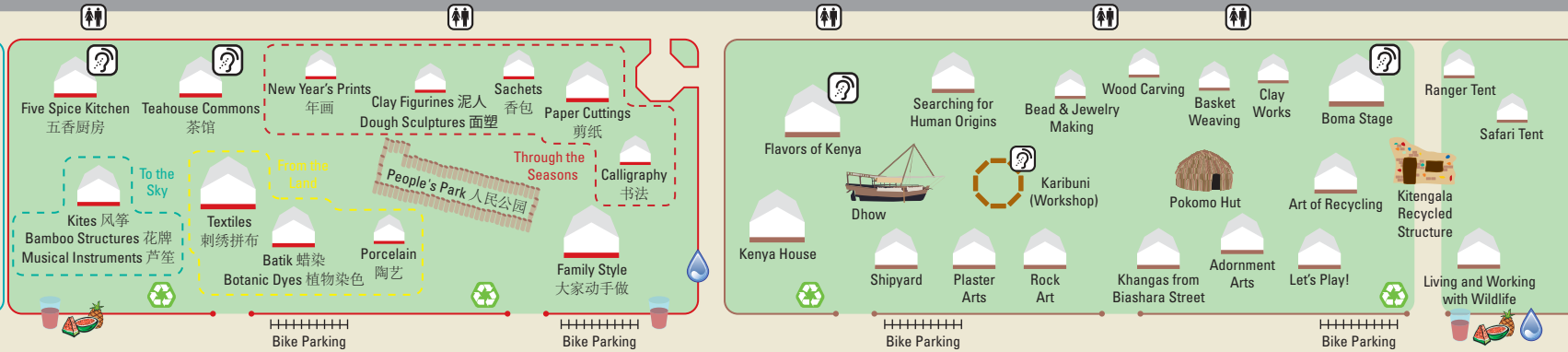
12th Street

MARKETPLACE **Shopping** Located near the National Museum of American History

Madison Drive NW



Washington Monument



Tian Tian 天天

CHINA
TRADITION AND THE ART OF LIVING 中国 传统与生活的艺术

- Moonrise Pavilion** (升月阁) Performance Stage
- DRINKS**: Dragon Tavern (龙门客栈)
- FOOD**: Chi Fan Le! Let's Eat! (吃饭了!)
- Dragon-Lion Cart** (九狮车)

KENYA
Mambo Tea

- Ngoma Performance Stage**
- FOOD**: Spice Routes Café Kenyan Coastal Cuisine
- FOOD**: Choma Grill Upland Kenyan Cooking

DRINKS: The Watering Hole

- Elephant Conservation Sculpture**

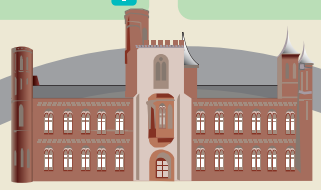
Kite Flying (放风筝)

Flower Plaque (花牌)

Volunteers/ Lost & Found/ Accessibility

First Aid

Media

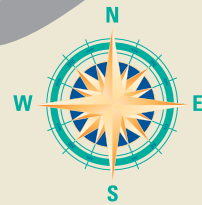


SMITHSONIAN CASTLE



Capitol

Jefferson Drive SW



- i** Information
- +** First Aid
- M** Media
- V** Volunteers/ Lost & Found/ Accessibility
- ♿** Toilets
- F&D** Food & Drink
- W** Water Station
- F&F** Fresh Fruit
- B** Beverages
- AL** Audio Loop
- R** Recycling

12th Street